

SAER[®]

ELETTROPOMPE

IR

CLOSE - COUPLED VERSION

MG

STUB - SHAFT VERSION

NCB-NCBK

LONG - COUPLED VERSION

IE3

PREMIUM EFFICIENCY

IE4

SUPER PREMIUM EFFICIENCY



AVAILABLE MATERIALS



CAST
IRON



DUCTILE
IRON



AISI
316



BRONZE

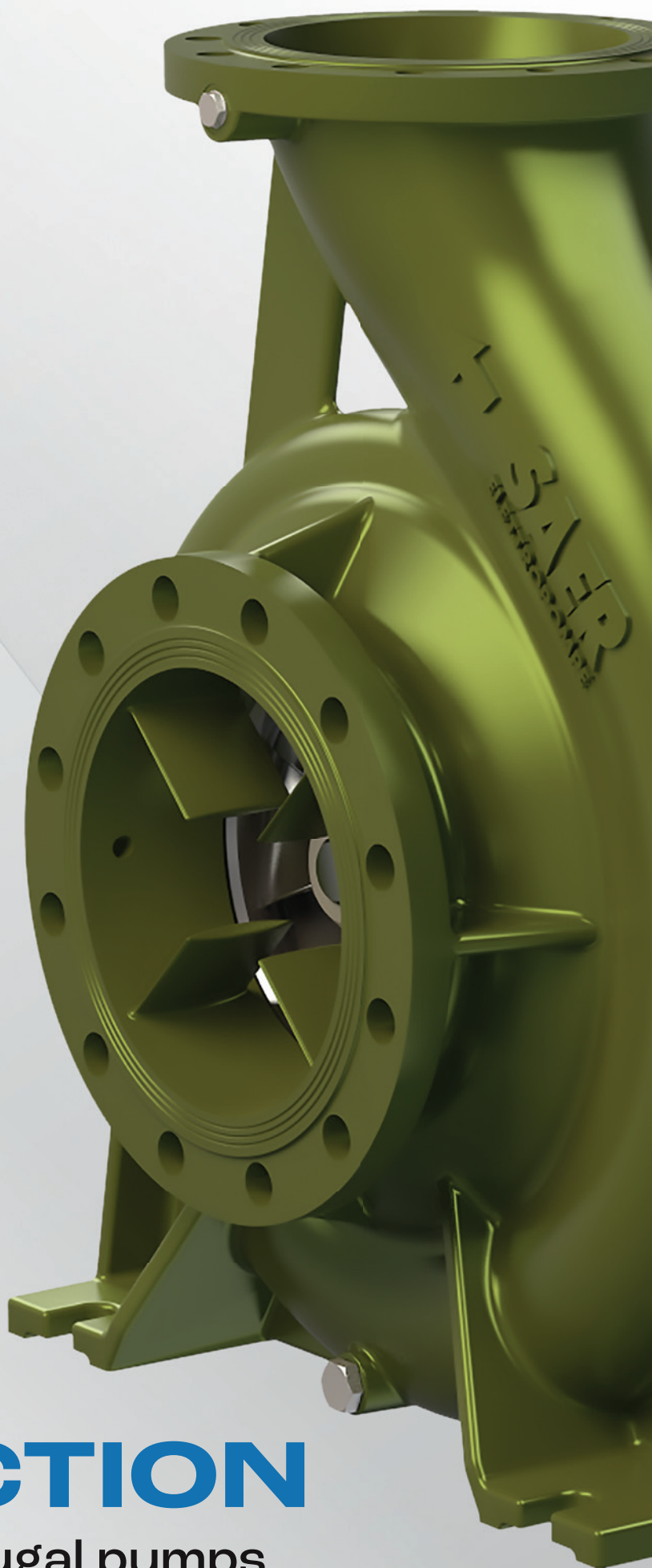


SUPER
DUPLEX

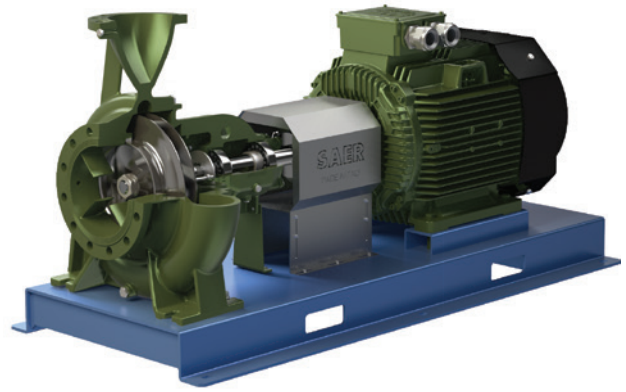
VERSIONS 50-60 Hz

END SUCTION

Clean water centrifugal pumps

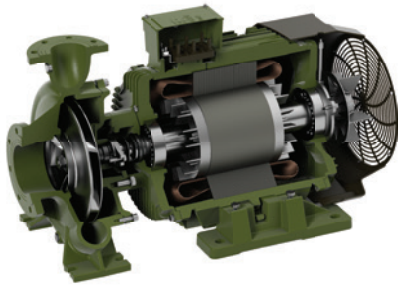


AVAILABLE VERSIONS



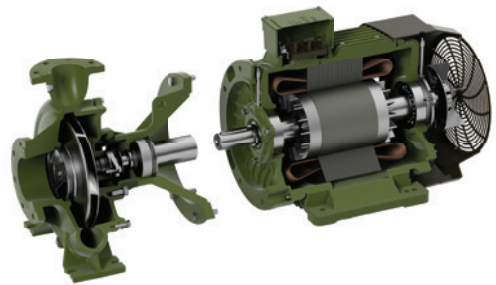
NCB - NCBK

LONG - COUPLED VERSION



IR

CLOSE - COUPLED VERSION



MG

STUB - SHAFT VERSION

MATERIALS

	STANDARD		ON REQUEST		
PUMP BODY	Cast iron EN GJL-250	Ductile iron EN GJS-500	Stainless steel AISI 316 (CF8M-1.4408)	Bronze CuSn10	Stainless steel SUPERDUPLEX 5A (CE3MN)
IMPELLER	Cast iron EN GJL-250	Carbon steel G20Mn5	Stainless steel AISI 316 (CF8M-1.4408)	Bronze CuSn10	Stainless steel SUPERDUPLEX 5A (CE3MN)
SHAFT	Stainless steel AISI 431 (1.4057)		Stainless steel DUPLEX (1.4362)		Stainless steel SUPERDUPLEX 5A (1.4501)

ACS (IR-MG-NCB-NCBK) or NSF61 (NCB-NCBK) certified version for pumping drinking water, available on request.

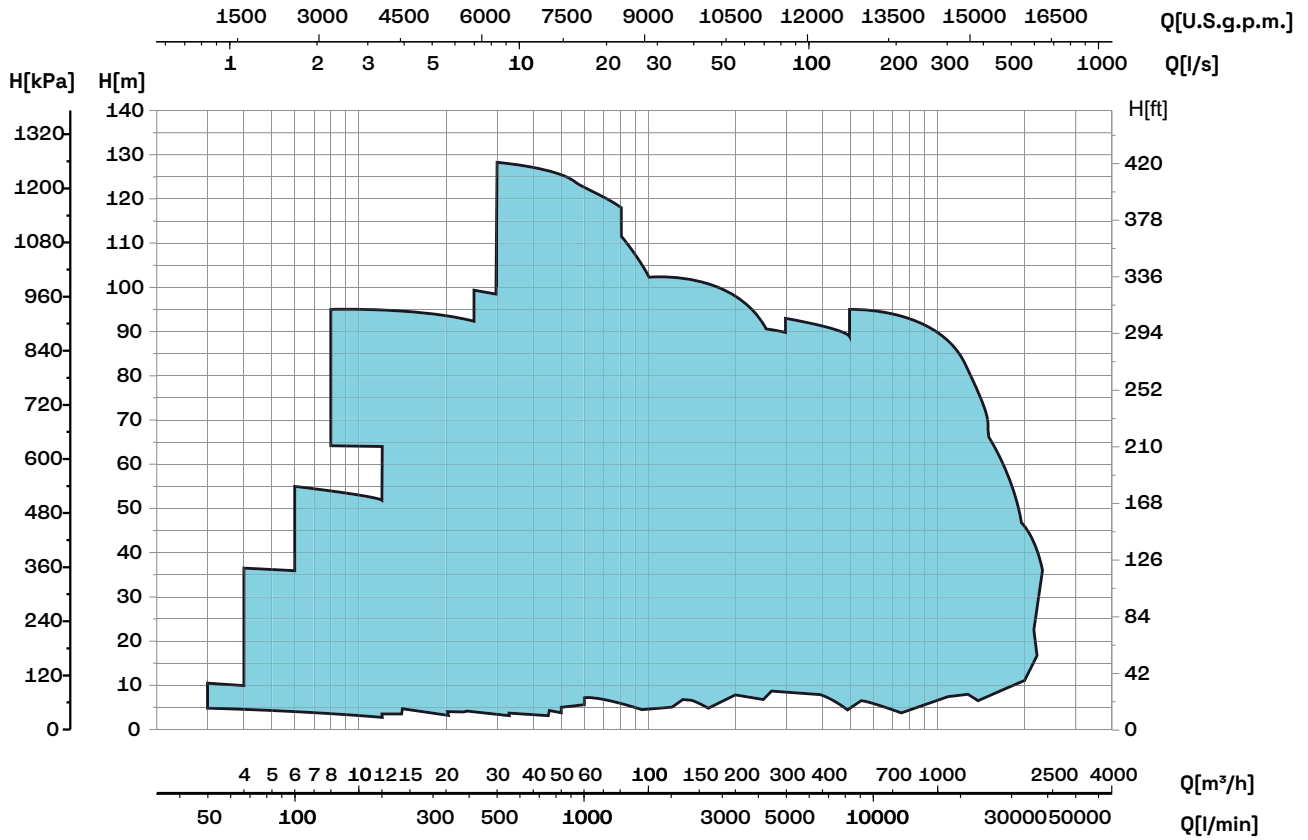
DIMENSIONS

OUTLET RATED DIAMETER DN	from 32 to 300
IMPELLER DIAMETER	from 125mm to 500mm

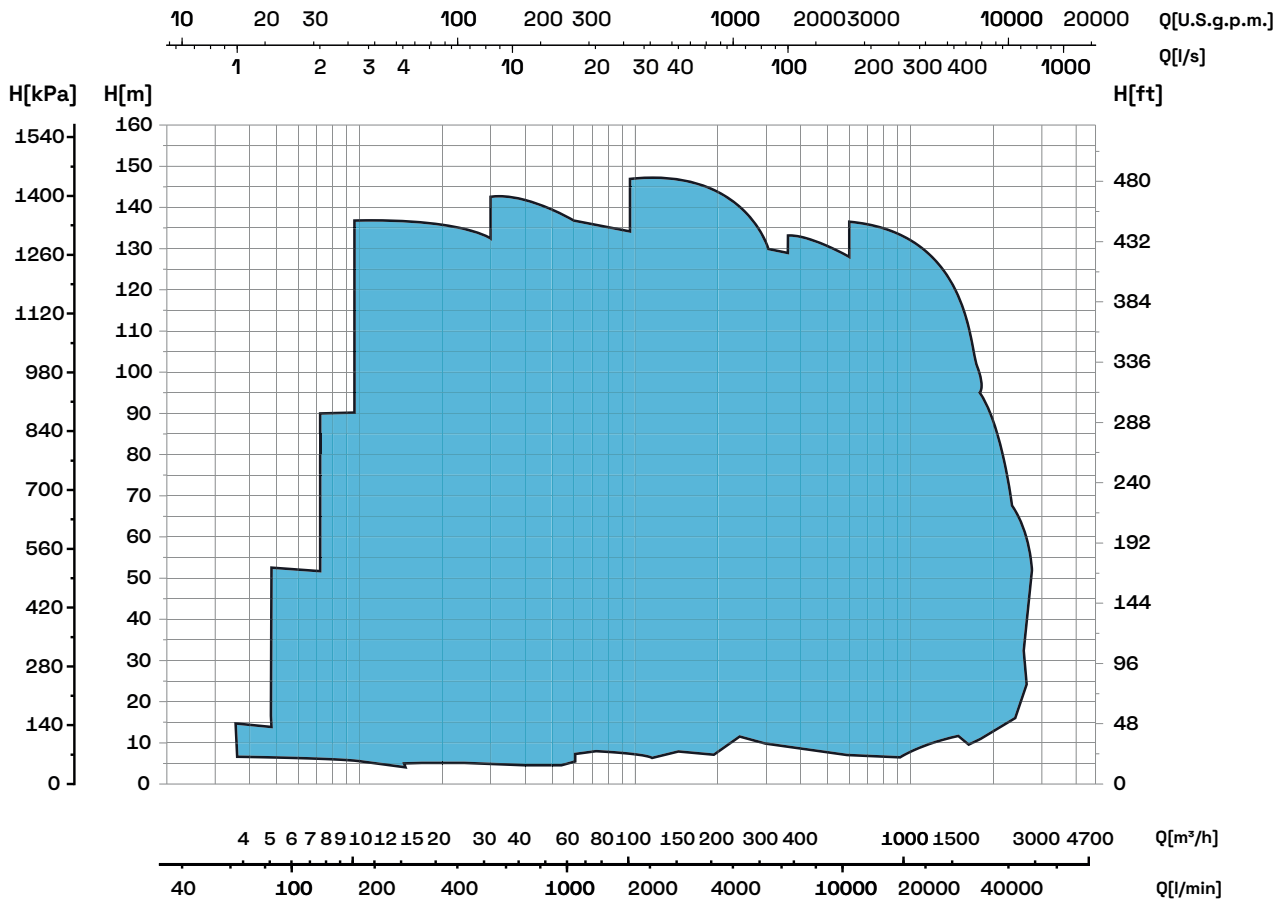
PERFORMANCE RANGES

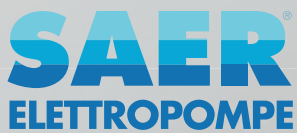
	50 Hz	60 Hz
FLOW	From 3 m ³ /h to 2300 m ³ /h	From 15 U.S.g.p.m. to 12000 U.S.g.p.m.
HEAD	From 3,5 m to 129 m	From 13 ft to 475 ft
POWER	From 0,37 kW to 400 kW	From 0,5 HP to 840 HP

2-4-6 POLES 50 Hz



2-4-6 POLES 60 Hz





SAER ELETTROPOMPE S.p.A.

Via Circonvallazione, 22 - 42016 Guastalla (RE) Italy
Tel. +39 0522 830941 - Fax +39 0522 826948
E-mail: info@saer.it - www.saerelettropompe.com



SAER is an ISO 9001:2015
Certified Company
Certificate N. 501003317



CAT0262 - 1.1/2023